



UNIVERSITY OF CAMBRIDGE INTERNATIONAL EXAMINATIONS
International General Certificate of Secondary Education

CANDIDATE
NAME

CENTRE
NUMBER

--	--	--	--	--

CANDIDATE
NUMBER

--	--	--	--

CAMBRIDGE INTERNATIONAL MATHEMATICS

0607/01

Paper 1 (Core)

For Examination from 2010

SPECIMEN PAPER

45 minutes

Candidates answer on the Question Paper

Additional Materials: Geometrical Instruments

READ THESE INSTRUCTIONS FIRST

Write your Centre number, candidate number and name on all the work you hand in.

Write in dark blue or black pen.

Do not use staples, paper clips, highlighters, glue or correction fluid.

You may use a pencil for any diagrams or graphs.

Answer **all** the questions.

CALCULATORS MUST NOT BE USED IN THIS PAPER.

All answers should be given in their simplest form.

You must show all relevant working to gain full marks and you will be given marks for correct methods even if your answer is incorrect.

The number of marks is given in brackets [] at the end of each question or part question.

The total of the marks for this paper is 40.

For Examiner's Use

--

This document consists of **8** printed pages.



Formula List

Area, A , of triangle, base b , height h .	$A = \frac{1}{2}bh$
Area, A , of circle, radius r .	$A = \pi r^2$
Circumference, C , of circle, radius r .	$C = 2\pi r$
Curved surface area, A , of cylinder of radius r , height h .	$A = 2\pi rh$
Curved surface area, A , of cone of radius r , sloping edge l .	$A = \pi rl$
Curved surface area, A , of sphere of radius r .	$A = 4\pi r^2$
Volume, V , of prism, cross-sectional area A , length l .	$V = Al$
Volume, V , of pyramid, base area A , height h .	$V = \frac{1}{3}Ah$
Volume, V , of cylinder of radius r , height h .	$V = \pi r^2 h$
Volume, V , of cone of radius r , height h .	$V = \frac{1}{3}\pi r^2 h$
Volume, V , of sphere of radius r .	$V = \frac{4}{3}\pi r^3$

Answer **all** the questions.

For
Examiner's
Use

- 1 At noon, in a ski resort, the temperature was $2\text{ }^{\circ}\text{C}$.
At midnight it was $-9\text{ }^{\circ}\text{C}$.

Write down the difference in temperature between noon and midnight.

Answer $^{\circ}\text{C}$ [1]

- 2 Write $\frac{17}{20}$ as a percentage.

Answer [1]

- 3 Work out $15 - 4 \times 6$.

Answer [1]

- 4 Work out $\frac{2}{3}$ of \$75.

Answer \$ [1]

- 5 Write down the value of $(0.2)^2$.

Answer [1]

10 Solve the equation $3(n - 2) = 2 - 3n$.

For
Examiner's
Use

Answer $n =$ [3]

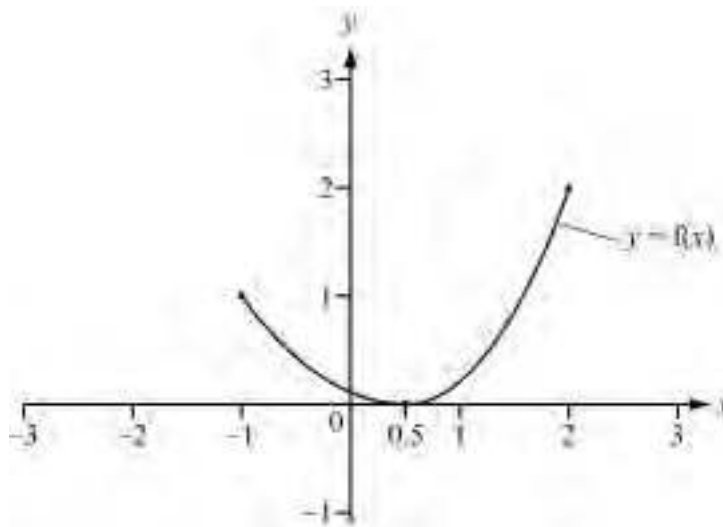
11 (a) Write 5^{-1} as a fraction.

Answer(a) [1]

(b) Simplify $12q^6 \div 6q^2$.

Answer(b) [2]

12



(a) For the graph of the function $f(x)$ shown in the diagram, write down

(i) the domain,

Answer(a)(i) [1]

(ii) the range.

Answer(a)(ii) [1]

(b) On the diagram, sketch the graph of $y = f(x + 1)$.

[1]

13 Solve the simultaneous equations.

$$2m + 3n = 13$$

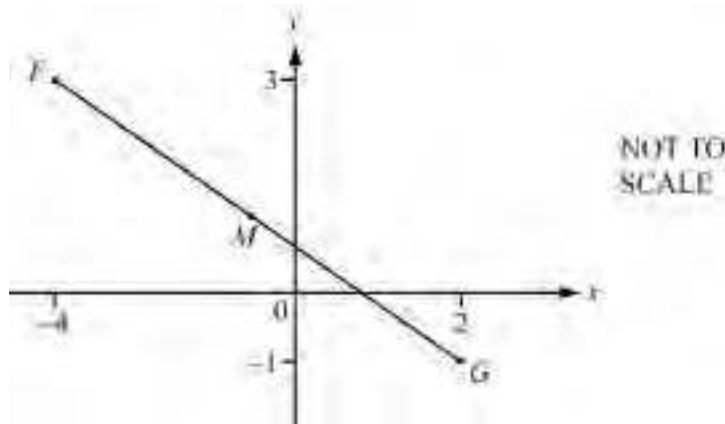
$$3m - n = 3$$

For
Examiner's
Use

Answer $m =$

$n =$ [3]

14



F is the point $(-4, 3)$ and G is the point $(2, -1)$.

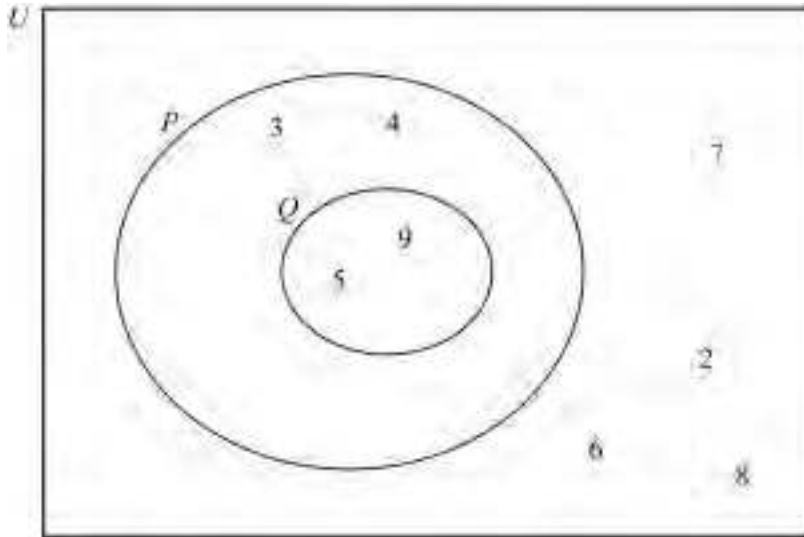
(a) Write down \overrightarrow{FG} in component form.

Answer(a) $\left(\begin{array}{c} \\ \end{array} \right)$ [2]

(b) Write down the co-ordinates of M , the mid-point of FG .

Answer(b) $(,)$ [1]

15



For
Examiner's
Use

The diagram shows a universal set, $U = \{2, 3, 4, 5, 6, 7, 8, 9\}$, and the sets P and Q .

(a) Write down

(i) the set P ,

Answer(a)(i) {.....} [1]

(ii) the set P' ,

Answer(a)(ii) {.....} [1]

(iii) the set $P \cap Q$

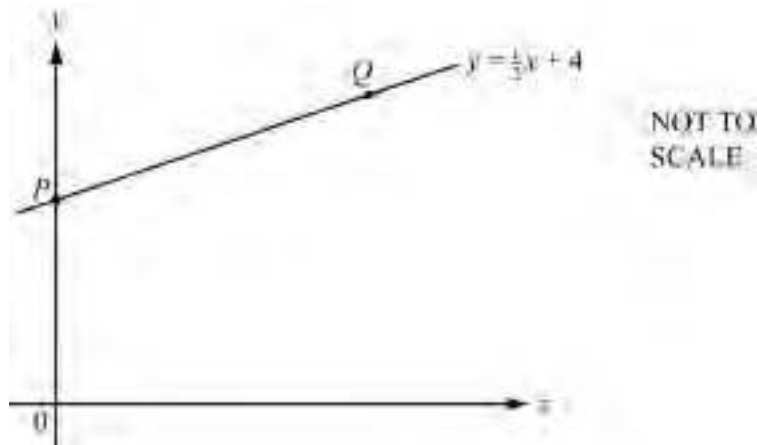
Answer(a)(iii) {.....} [1]

(b) Insert one of the symbols \in , \subset , \cup , \cap to make each of the following statements correct.

(i) $Q \dots\dots\dots P$ [1]

(ii) $P \dots\dots\dots Q = P$ [1]

16



The diagram shows the straight line $y = \frac{1}{2}x + 4$.

The line crosses the y -axis at P .

(a) Write down the y co-ordinate of P .

Answer(a) [1]

(b) Write down the gradient of the line.

Answer(b) [1]

(c) At Q , $y = 6$.

Find the x co-ordinate of Q .

Answer(c) [1]

(d) Another straight line, L , is parallel to the line $y = \frac{1}{2}x + 4$ and passes through $(0, 1)$.

Write down the equation of L in the form $y = mx + c$.

Answer(d) [2]

Permission to reproduce items where third-party owned material protected by copyright is included has been sought and cleared where possible. Every reasonable effort has been made by the publisher (UCLES) to trace copyright holders, but if any items requiring clearance have unwittingly been included, the publisher will be pleased to make amends at the earliest possible opportunity.

University of Cambridge International Examinations is part of the Cambridge Assessment Group. Cambridge Assessment is the brand name of University of Cambridge Local Examinations Syndicate (UCLES), which is itself a department of the University of Cambridge.